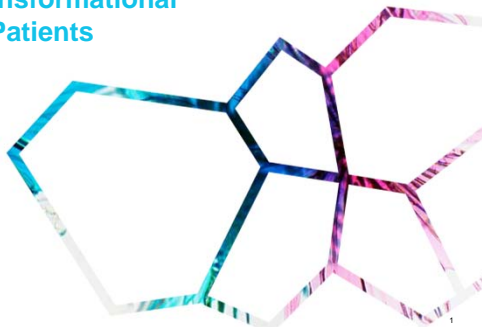


**Johnson & Johnson** INNOVATION | **JLABS**

## Catalyzing Innovation to Deliver Transformational Solutions to Patients



November 9, 2015

## About JLABS

- Creates a **flexible, capital-efficient environment** to cut the time and cost of getting innovations to patients
- Model **allows entrepreneurs to put their capital to work** immediately in an optimized, efficient environment
- Reduced infrastructure costs and centralized management** of shared facilities allows entrepreneurs to spend time building value for their discoveries
- Business programs, funding partners, experts and a **network of life science innovation**


**No strings attached!**



**Johnson & Johnson** INNOVATION | **JLABS**

## About JLABS

- Flagship, 40,000 sq. ft. incubator launched in San Diego in Jan 2012
- Grown to 6 facilities across 3 life science hubs
- Expanding to Houston: JLABS @TMC in 2016
- Expanding to Toronto: JLABS @ Toronto in 2016
- 100+ companies in residence



**Johnson & Johnson** INNOVATION | **JLABS**

## Providing large company infrastructure & management

<h3>Common Areas</h3> <ul style="list-style-type: none"> <li>Full PMs/servicing of building</li> <li>Janitorial supplies &amp; management</li> <li>Kitchen supplies &amp; management</li> <li>Security including guards, cameras, badge system</li> </ul>	<h3>Operations Management</h3> <ul style="list-style-type: none"> <li>Facilities maintenance &amp; service</li> <li>Core equipment maintenance &amp; service</li> <li>Shipping &amp; receiving</li> <li>Chemical inventory management</li> <li>General waste &amp; recycling management</li> <li>Basic office &amp; lab supplies in the common business and lab areas</li> <li>Data and phone system installation and management</li> </ul>
<h3>Business Services</h3> <ul style="list-style-type: none"> <li>Reception service</li> <li>Business center</li> <li>Bulk purchasing/supplier discounts</li> <li>HR services program</li> </ul>	<h3>EH&amp;S Services</h3> <ul style="list-style-type: none"> <li>EH&amp;S facilitation &amp; services</li> <li>EH&amp;S training</li> </ul>

**Johnson & Johnson** INNOVATION | **JLABS**

## JLABS Common Equipment

Analytical balance	Multimode plate reader	Flammable storage cabinets
Top loading balance	Nanovue spectrophotometer	Floor centrifuges
LCMS – QTOF	RT QPCR	Microcentrifuges
LCMS – single quad	Thermal cycler	pH meter
Lyophilizer	Biosafety cabinets	Refrigerators
UPLC	CO <sub>2</sub> incubator	-20°, -80° C freezers
Gel doc/gel station	CO <sub>2</sub> incubator (low O <sub>2</sub> )	Cryostorage
Fluorescence microscope	Gravity incubator	<i>More to come...</i>
Inverted microscope	Incubator shakers	



## Commercialization Curriculum

<b>Industry Panels</b> Strategic trends	<b>Educational Workshops</b> Tactical 'how to'	<b>Funding Forums</b> Finding partners	<b>Industry Partnering</b> Supporting local community
BILL & MELINDA GATES foundation Breakout Labs NIH poliwogg FOX DARPA	THE ROAD TO IND BIOLOGICS nature biotechnology TEDx	wellcome trust OrbiMed POLARIS Mercury Fund NEA NATIONAL CANCER INSTITUTE	BIOCOM BIOHOUSTON BAYBIO WIB MassBio CONNECT



## Alector, Inc. Case Study



### JLABS incubates company to facilitate ROFN on lead program in Alzheimer's disease

- Apr 2013:** J&J Innovation meets with founders to help select targets of interest
- Oct 2013:** Company founded and \$10MM seed funding secured from external partner, Alector joins JLABS to pursue program
- Nov 2013:** J&J Innovation secures ROFN on lead program
- Sept 2015:** \$32MM series C raise
- Dec 2015:** Anticipated ROFN upon completion of preclinical in vivo test of concept studies

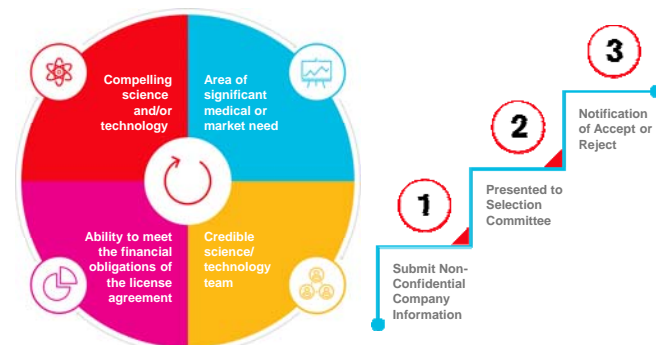


**Guy Seabrook**  
Neuroscience, CAIC

*"The trust and rapport secured during Alector's tenure at JLABS allowed us to influence the founders to mature a high risk project of interest to Janssen using OPM. In addition, it helped the Alzheimer's DAS secure a highly cost-effective right of first negotiation (\$250k!) that give us the opportunity to make a data driven decision on a novel near-NME stage asset."*



## Selection Criteria & Process



### In the News

**GEN** Genetic Engineering in Biotechnology News  
May 30, 2012  
Academia Increasingly Going Beyond Basic Research by Setting Up Translational Med Centers

**BIO WORLD PERSPECTIVES**  
Like Warren Buffett, J&J Throws Down Incubator Gauntlet ... Who's Next?  
January 19, 2012

**nature biotechnology**  
Pharma incubates without strings  
10 April 2012

**The San Diego Union-Tribune**  
Lab incubates life-science startups

**J&J Launches Incubator with No Strings-Attached Biz Model**  
Tuesday, October 16, 2011

**Inc.**  
Attention Start-ups: Big Corporations Want to Work With You

### JLABS @TMC

Shared core laboratory and business facilities

Labels in diagram include: Biology and Chemistry Core Labs, Cell Culture Facilities & Cold Storage, Concept Lab 1, Conference Rooms, Courtyard, Event and Networking Space, Video Conferencing, Break Room & Kitchen, Conference Room, Concept Lab 2, Collaboration Spaces, Prototyping Lab.

CONFIDENTIAL: For internal use only

### JLABS @TMC

- 34,000 sq ft site at Opening Mar 2016
- Over 17,000 sq. ft. in common areas, laboratory spaces and facilities
- Combination of shared lab space, private offices, and modular laboratory suites
- >70 pieces of core laboratory equipment
- Value-added solutions including operational support, education and business services

### JLABS @ TMC Quick Fire Challenge

- Award up to four companies one year of access to JLABS @ TMC
- Looking for new, innovative companies
- One company will be selected for each sector:
  - Therapeutics
  - Medical Devices
  - Consumer Health
  - Digital Health
- Call for companies started on October 7, 2015
- Deadline for applications is January 18, 2016
- Winners will be announced at Grand Opening on March 2, 2016

## Upcoming Events

- Dec 1 | Meet with the Gates Foundation
- Dec 3 | First Thursday
- Feb 17 | From Chemical to Drug - The Path to a Small Molecule IND
- March 2 | Grand Opening of JLABS @ TMC



CONFIDENTIAL: For internal use only

13



## Thank you!

VIDEO

Emmanuelle Schuler, PhD, MBA  
Head of JLABS @ TMC  
832-603-7742  
eschuler@its.jnj.com



14